

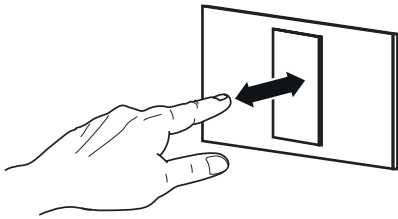


## Driver Osram dimmer memory setting

led driver settings / settaggio driver led / configuraciòn driver led / réglage driver led / konfiguration driver led

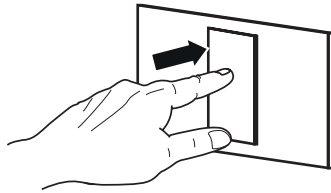


i



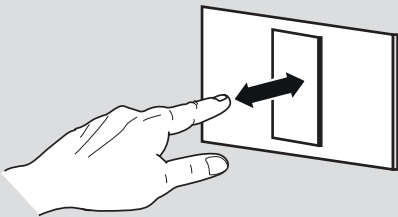
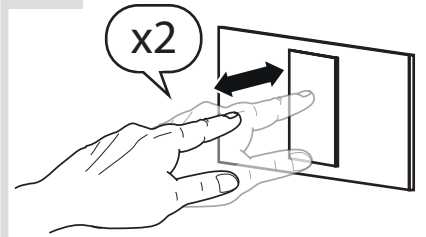
100%

1



n%

2



n%

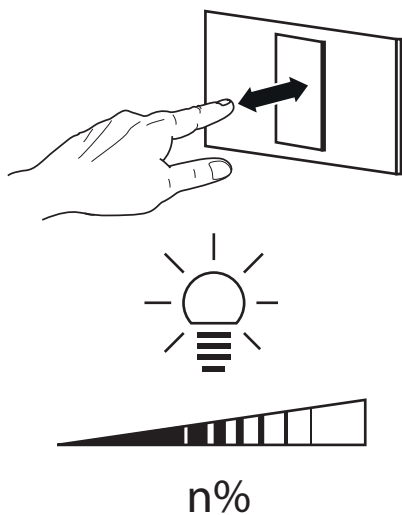


## Driver Osram dimmer memory reset

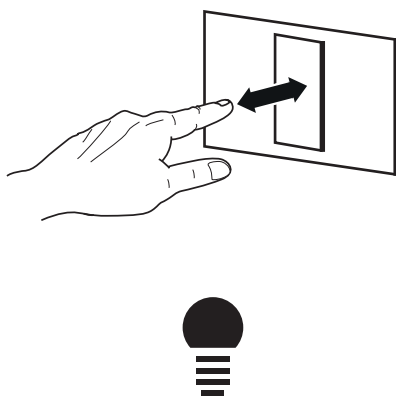
led driver settings / settaggio driver led / configuraciòn driver led / réglage driver led / konfiguration driver led



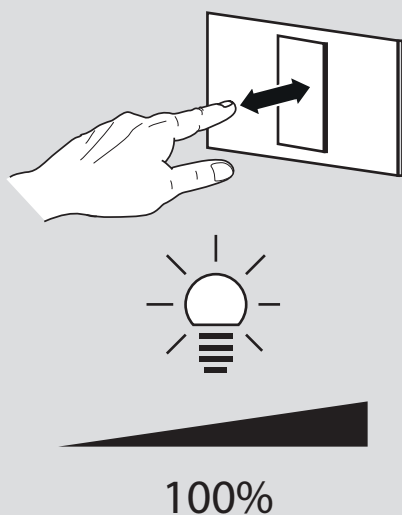
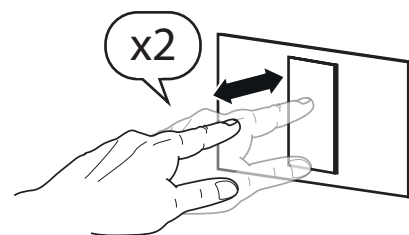
i



1



2



**Artemide**

via Bergamo, 18  
20010 Pregnana M.se (MI)  
ITALIA

tel. +39 02 935 181  
fax +39 02 935 90 254  
fax +39 02 935 90 496

[www.artemide.com](http://www.artemide.com)

VAT IT00846890150